

SAFETY
LEVEL

AESTHETICS

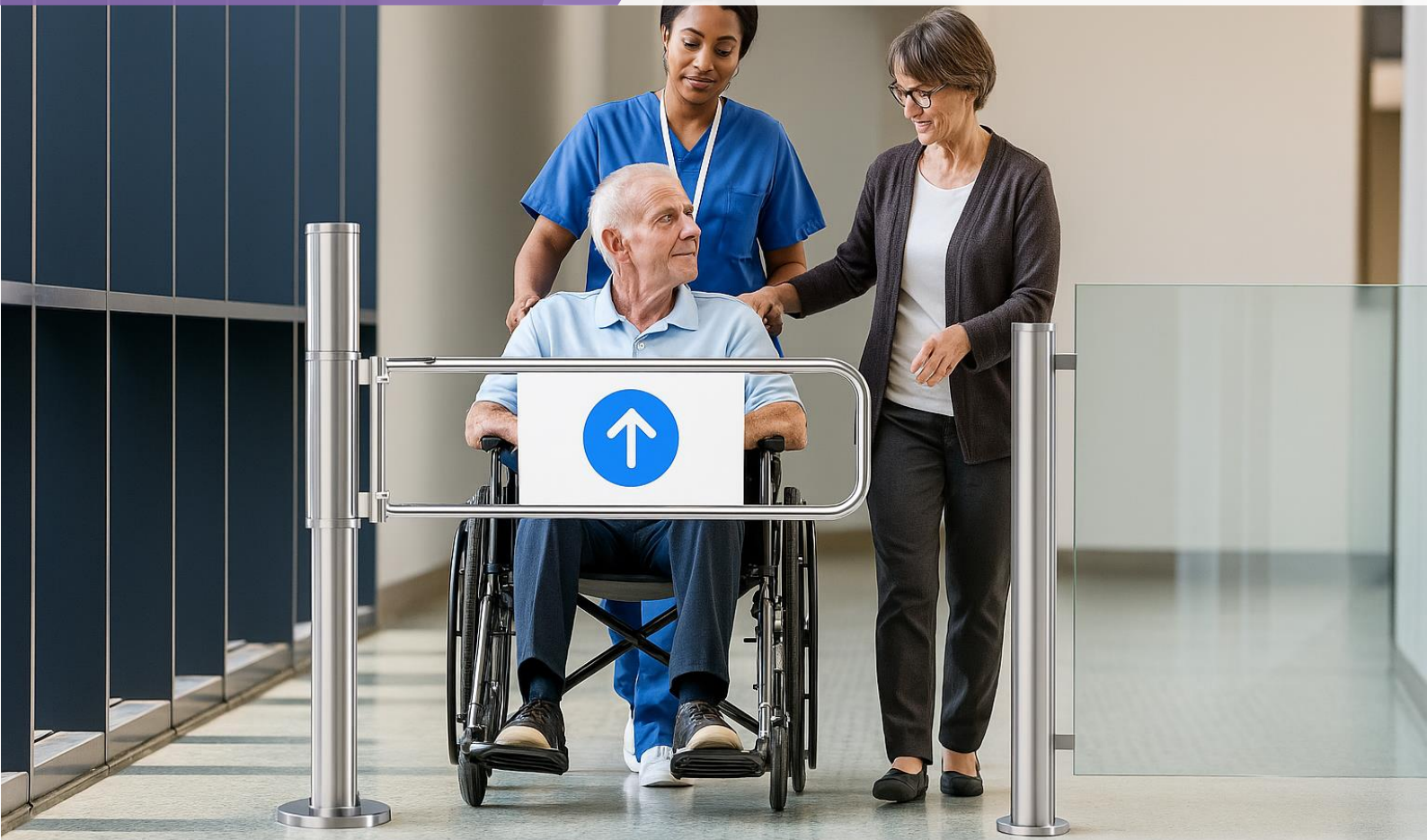
COSTING

Manual Swing Gate

- Passage: Supports single-direction movement (entry or exit) and operates without electricity.
- Design: Manual swing gate with a 64mm brushed stainless steel pillar, suitable for narrow installation spaces.
- Versatility: A single unit supports a 900mm arm, allowing easy access for wheelchairs and passengers with large luggage.
- Expandable Width: Two units can create a passage up to 1800mm wide, accommodating 3–4 people simultaneously.
- Durability: Ideal for both indoor and outdoor use.
- Applications: Suitable for supermarkets and similar environments.

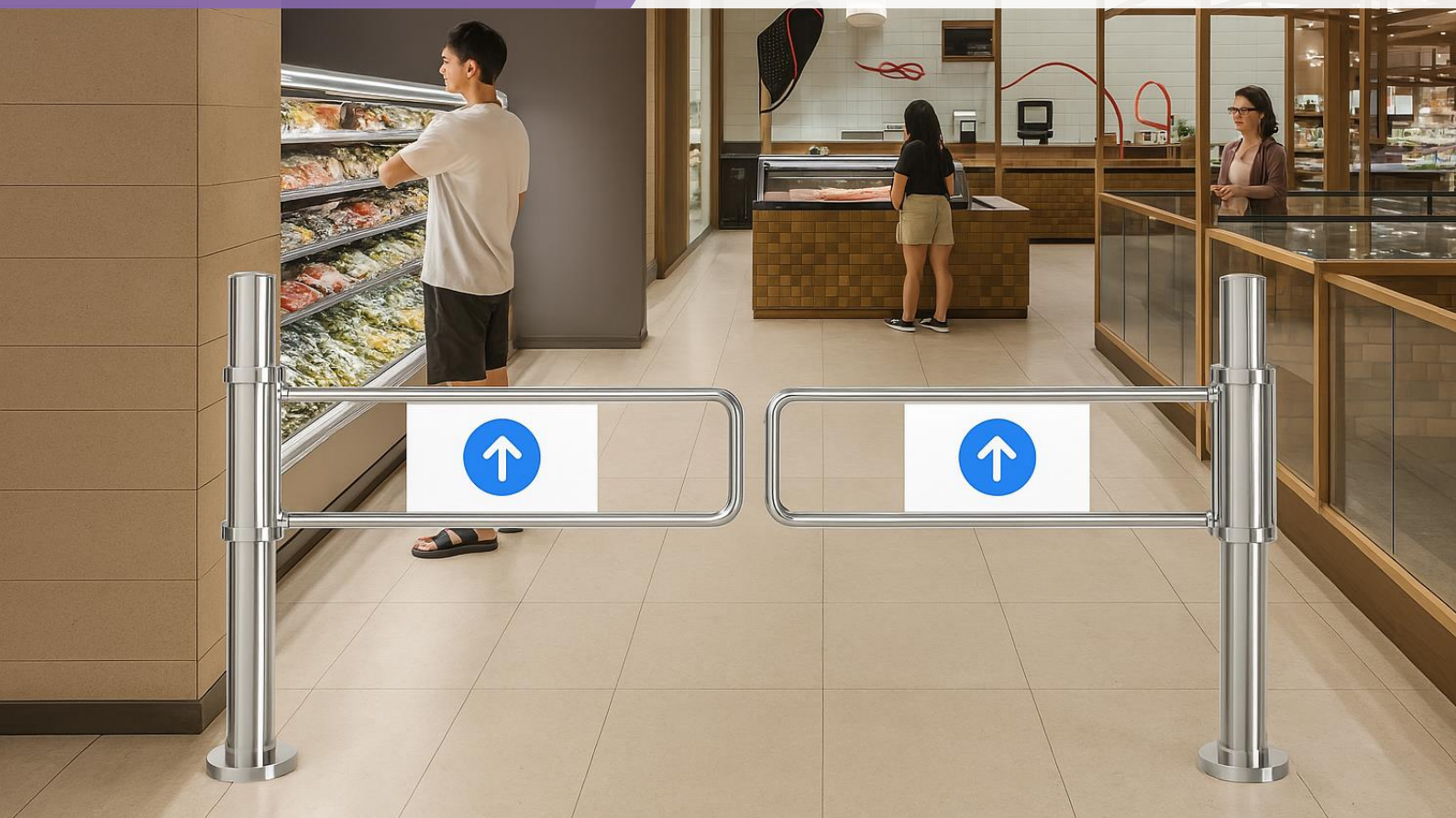
1pcs for 900mm width

A single unit supports a 900mm arm, allowing easy access for wheelchairs and passengers with large luggage.



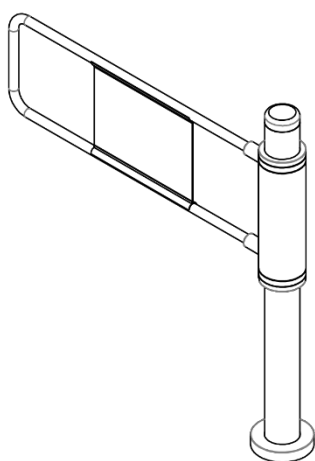
2pcs for 1800mm width

A double unit supports a passage width of 1800mm, allowing simultaneous entry for 3–4 people.



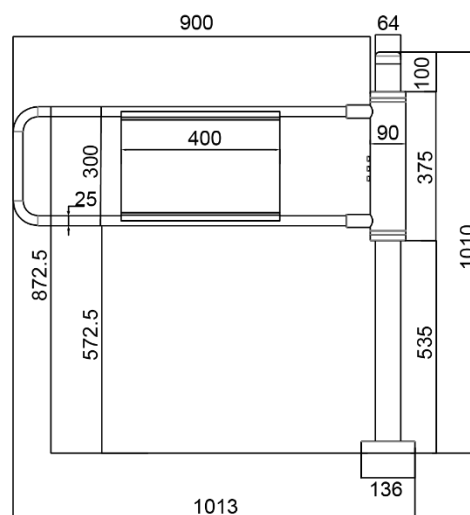
Specifications

Type	Manual Swing Gate
Framework Material	Stainless Steel
Arm material	Stainless steel
Dimension	900*64*1010mm
Net Weight	25kg/pcs
Passage Width	1 pcs - 900mm 2 pcs - 1800mm
Passing Direction	Single directional
Flow Rate	40 people per minute
Manual push	Left or right

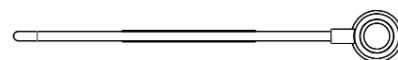


Dimensions

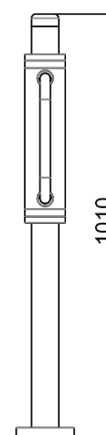
Front View



Top View



Side View



* The middle area of the swing gate can be customized with an OEM logo.