

PP-9735



01/

- XPPC continues the XPOS's DNA, keep it slim and dual-hinge design.
- Using Intel Elkhart Lake 10th Generation Processor & Support High-speed PCIe M.2 SSD.
- Adjustable angle and height improve the viewing angle, enhance the user experience, can also be Desktop, Pole or Wall-mounted.
- Easy for maintenance: Easy to access DRAM/ SSD/ MB.
- Shared Peripherals: Share the same peripherals with XPOS.

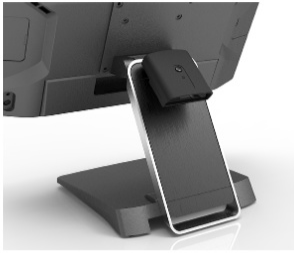
ECO-FRIENDLY

Reduce the size and package to save the environment and for easier transportation

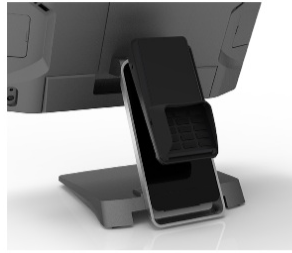


02/ WITH PAYMENT EFT / SCANNER

Two ways for add-on device settlement.



Arm type
Barcode Scanner



Payment Device



RFID Device

03/ 2nd Display

Arm / Pole Type for different countertop



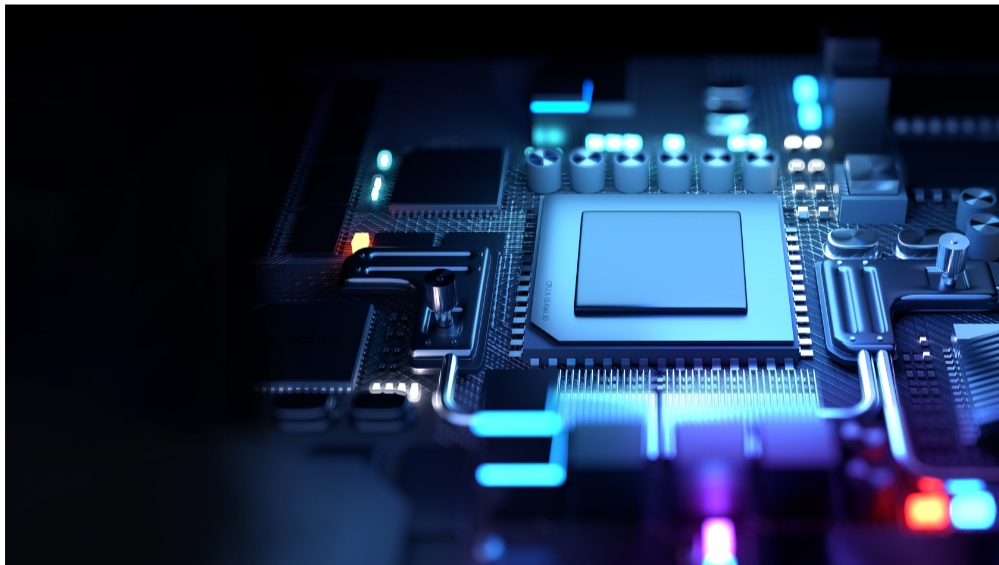
04/ SENSOR

Ambient light sensor allows system automatically adjust the brightness of the screen according to the environment.

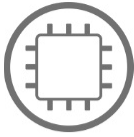


05/ Processor J6412

Fanless CPU For Complex solution.



Spec.



CPU

- Intel® Celeron® J6412 1.5M Cache, 2.60GHz



Memory

- 4GB Standard, Max 32GB (1 x So-DIMM DDR4)



Storage

- 1 x M.2 M Key (SATA III or PCIe)



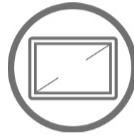
Connection

- 1 x M.2 E Key 802.11ac + BT4 (Optional)



Speaker

- 2 x 2W Internal Speaker



Display

- 15" TFT, 1024 x 768



Touch

- True-Flat PCAP



Brightness

- 350 nits



Camera

- 2MP Front Camera (Optional)



Power

- 20V / 90W or 130W External Adapter



OS

- Windows 10 Enterprise (LTSC, SAC)
- Windows 11 IoT Enterprise (Est. available in Q3 2023)
- Linux



TPM

- TPM2.0: Intel PTT



Mounting

- VESA 100 x 100 mm



Certification

- FCC / CE Class B



Appearance

- Aluminum Die-Casting + Plastic
- Galaxy Grey + Silver



Temperature

- Operation: 0 °C ~ 40 °C (32 °F ~ 104 °F)
- Storage: -20 °C ~ 60 °C (-4 °F ~ 140 °F)



Dimensions (W x H x D)

- Product: 342 x 310 x 342 mm
- Carton: 492 x 168 x 488 mm



Weight

- Net 3.42 KG,
- Gross 6.2 KG



Port

- 1 x RJ11 (12V / 24V) Cash Drawer
- 2 x RJ45 (COM1, COM2) RS232
- 4 x USB Type A (3 x USB 2.0, 1 x USB 3.0)
- 1 x RJ45 GigaLAN
- 1 x Video Port
- 1 x 20V DC-In
- 1 x Smart DD
- 1 x Smart I/O (Reserved for additional DC output 5V/12V/24V, USB, or Com ports)



Optional

- Universal I/O (Select 1 from below)
 - 1 x PUSB 24V
 - 1 x PUSB 12V
 - 1 x RJ45 (COM) RS232
 - 2 x USB 2.0 TypeA