

**ST-36**

Tripod Turnstile

SAFETY  
LEVEL

AESTHETICS

COSTING

**Tripod Turnstile**

The ST-36 is the slimmest tripod turnstile in its class, combining cost-effectiveness with a sleek, modern design. It ensures secure, one-person access and prevents unauthorized trailing.

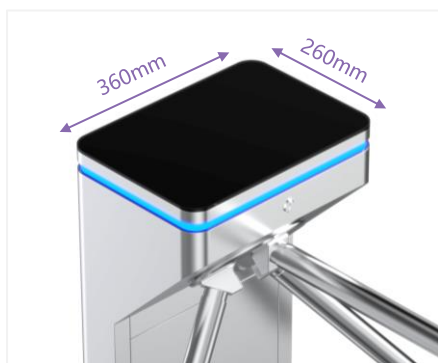
Featuring a high-quality black tempered glass top and a full stainless-steel body accented with a vibrant LED light bar, it offers both functionality and striking aesthetics.

## Features

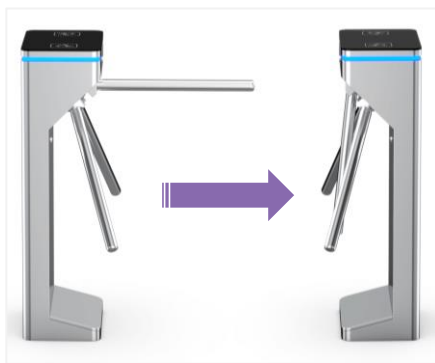
- Supports one-way and bi-directional operation
- Fully compatible with all access control systems
- Compact design, perfect for space-constrained areas
- Energy-efficient with low power consumption
- Smooth, quiet, and reliable operation
- LED indicators (green/red) for clear passage status
- IP65-rated for water and dust resistance — suitable for indoor and outdoor use
- Fire safety compliant — arms automatically drop in emergencies

## Customized Service

- Customizable color to match installation environment
- Flexible dimensions to meet specific requirements
- Logo branding available
- Supports one-way and bi-directional operation
- Supports customized integration with various access control solutions.



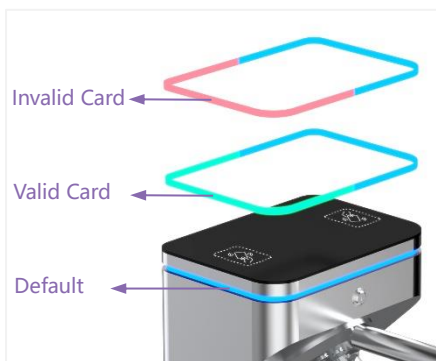
Compact dimensions



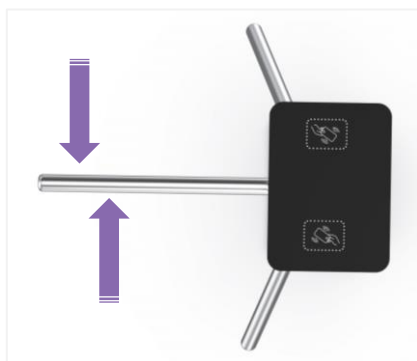
Safety Requirements  
Arms Drop Down



Sturdy Bottom, No Shaking



LED Indicator



Single / Bi-directional



Anti-trailing Function  
(one person can pass at one time)

## Access Control System

Seamlessly integrates with any third-party access control system.



Card Solution (Optional)



QR/Barcode Solution (Optional)



Biometric Solution (Optional)



Remote Control



Touchless Button



Card



QR Code



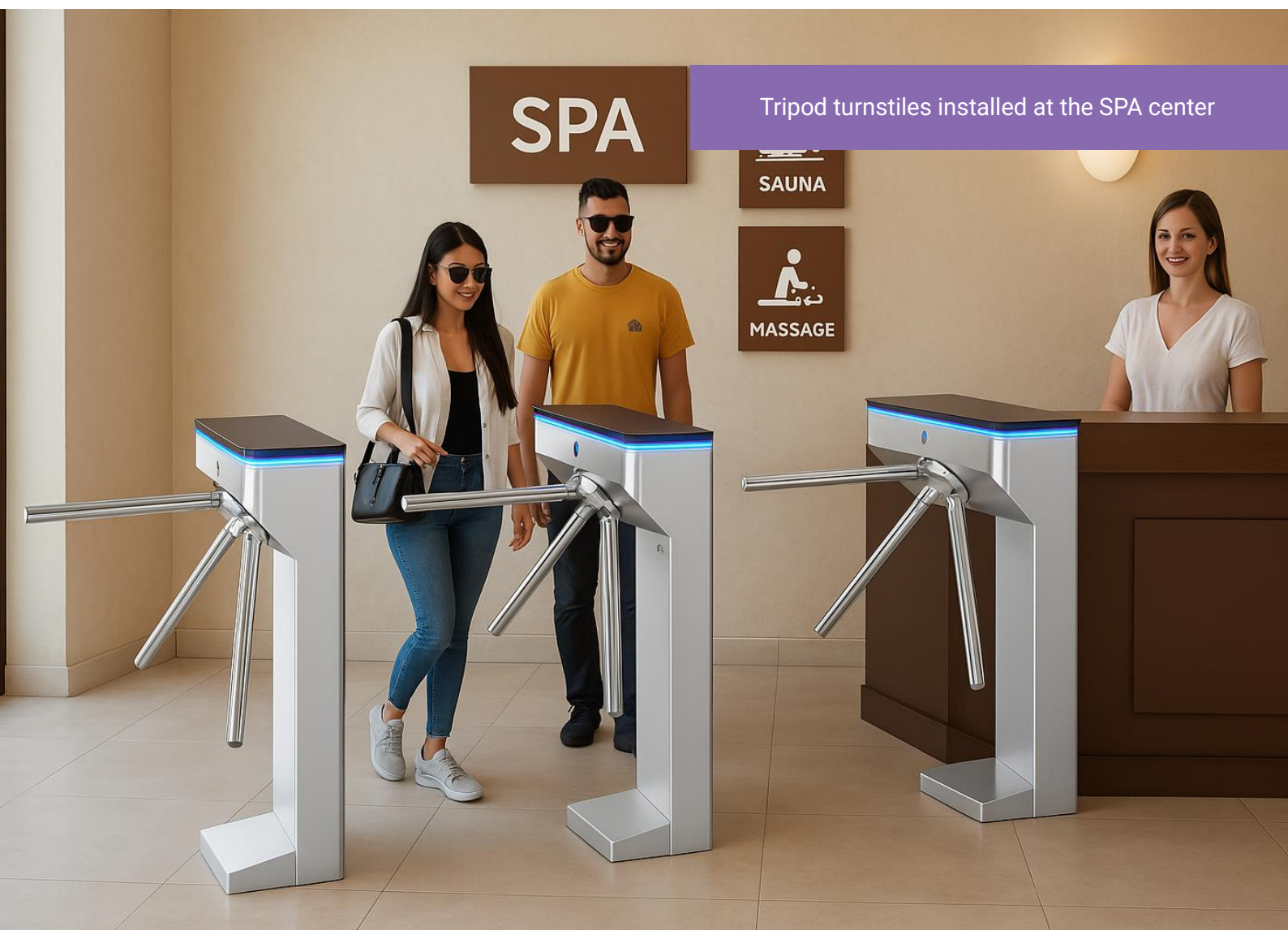
Fingerprint



Face



Palm Vein

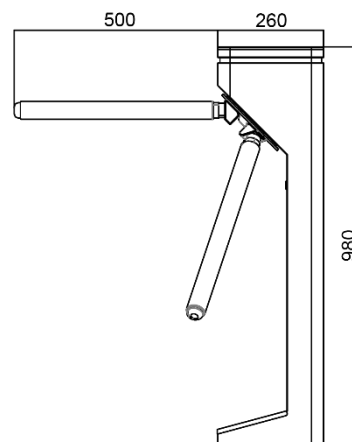


## Specifications

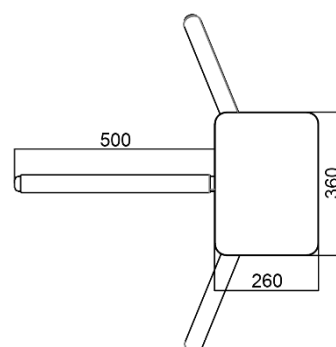
Model	ST-36
Type	Tripod Turnstile
Framework Material	Stainless Steel + Black tempered glass
Dimension	360*260*980mm
Net Weight	35kg/pcs
Passage Width	550mm (arm 500mm)
Passing Direction	Single directional / Bi-directional
MCBF	10 million
Power Supply	AC220V/110V, 50/60Hz
Operation Voltage	24V DC
Power Consumption	40W
Operation Temperature	-20 °C - 75 °C
Operation Humidity	0 ~ 95% (No freeze)
Working Environment	Indoor / Outdoor waterproof
Flow Rate	40 people per minute
LED Indicator	Two LED indicators on top: green → entry, red × no entry
Emergency	Automatic arm open when power off
Communication	Dry contact, Relay signal, RS485
Flexibility	Integrate with any access control

## Dimensions

Front View



Top View



Side View

