



SAFETY  
LEVEL

AESTHETICS

COSTING

## Optical Telescopic Gate

This premium optical telescopic gate blends sleek aesthetics with robust performance, featuring a painted stainless steel body and smooth-operating glass arms that extend up to 1000mm.

A built-in LED display on the top clearly indicates access status, enhancing user guidance and flow.

Advanced infrared sensors detect the presence of individuals, automatically preventing the glass arms from closing—ensuring safe and reliable operation at all times.

## Features

- Compatibility: Supports integration with all types of access control systems.
- Adjustable Passage Width: Can be extended up to 1000mm for wider access.
- Energy Efficient: Designed for low power consumption.
- Smooth & Quiet Operation: Runs with minimal noise and ensures seamless performance.
- LED Indicators: Green and red LED lights display passing status.

## Customized Service

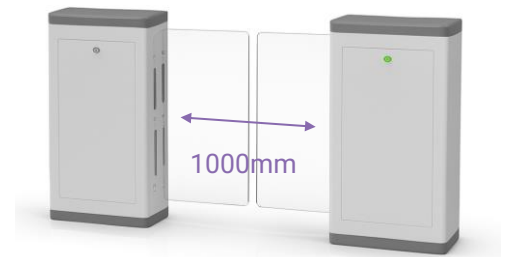
- Customizable Design: Appearance color can be tailored to match the installation environment.
- Flexible Sizing: Dimensions can be customized to meet specific requirements.
- Branding Options: Custom logo placement is available.
- Adjustable Arm Width: Glass arm width can be selected based on preference.
- Configurable Sensors: The number of infrared sensors can be customized as needed.



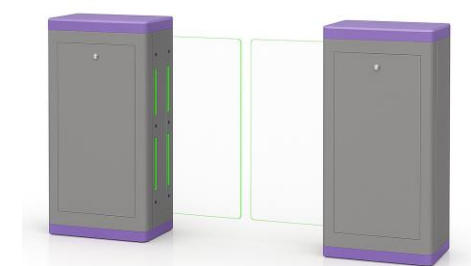
Infrared Sensors (Optional)  
Anti-pinch Function



Custom Logo



Wide Lane



Customizable



LED Indicators



Safety Requirements Arms  
Retract Automatically

## Access Control System

Seamlessly integrates with any third-party access control system.



Card Solution



QR / Barcode Solution



Remote Control



Touchless Button



Card



QR Code



Fingerprint

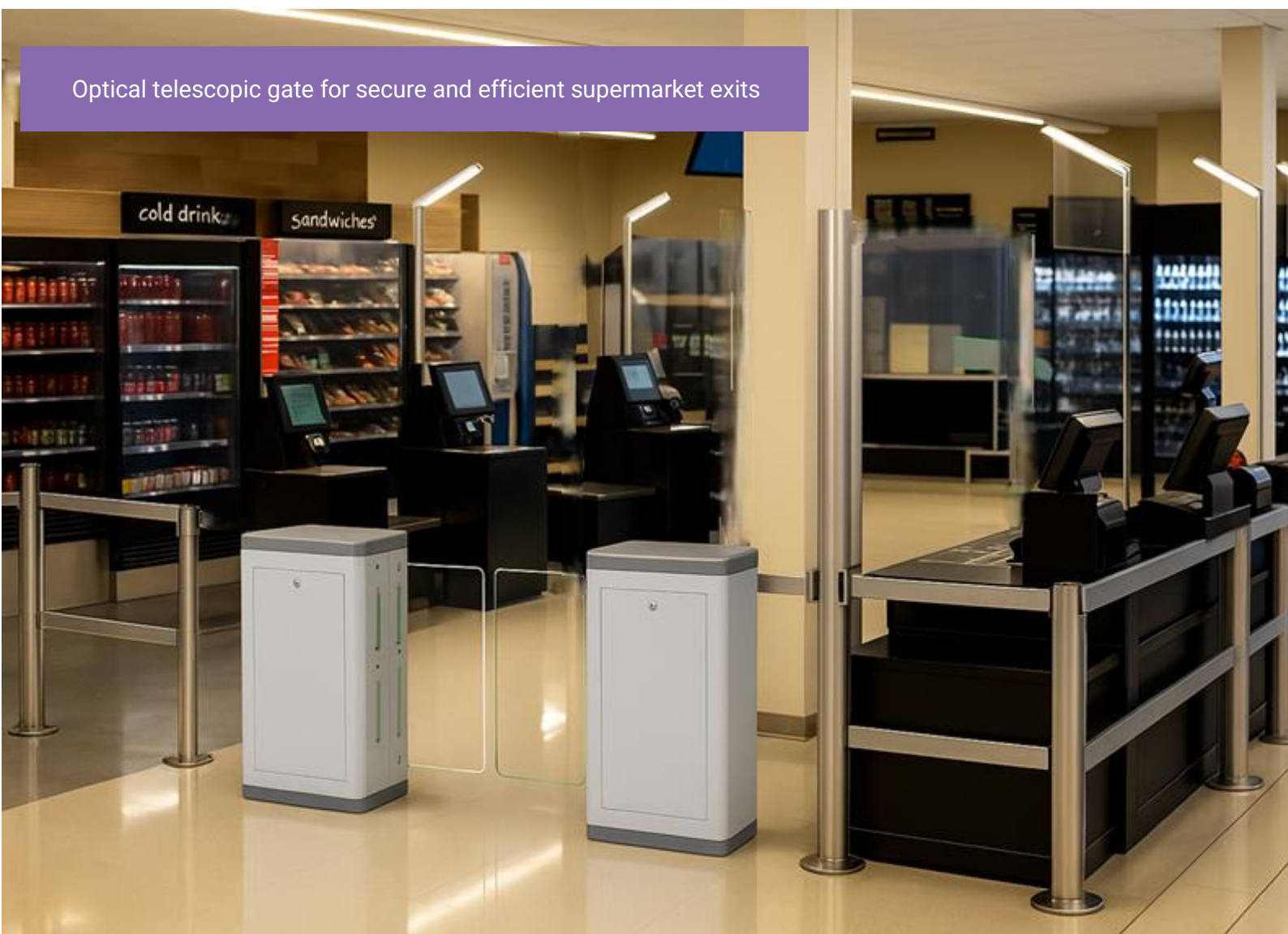


Face



Palm Vein

Optical telescopic gate for secure and efficient supermarket exits



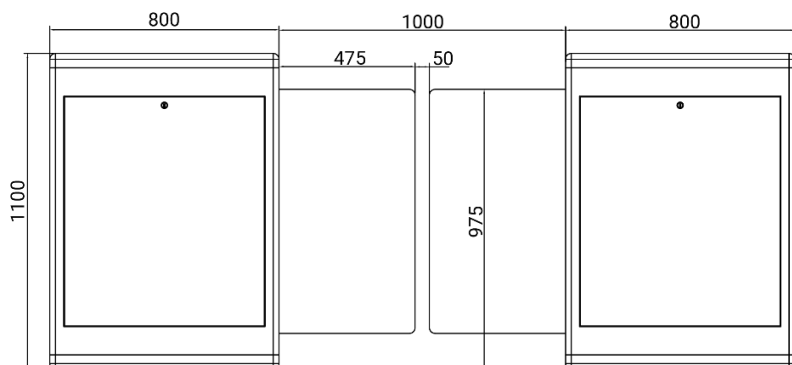
## Specifications

Type	Optical Telescopic Gate
Framework Material	Steel + Tempered glass
Dimension	2600*200*1100mm (customizable)
Net Weight	70kg/pcs
Passage Width	≤1000mm
Passing Direction	Retractable
MCBF	15 million
Power Supply	AC220V/110V, 50/60Hz
Operation Voltage	24V DC
Power Consumption	40W
Operation Temperature	-20 °C - 75 °C
Operation Humidity	0 ~ 95% (No freeze)
Working Environment	Indoor / Outdoor (shelter)
Flow Rate	35 people per minute
LED Indicator	green → entry, red × no entry
Infrared Sensor	3-6 Pairs (Optional)
Emergency	Automatic arm open when power off
Communication	Dry contact, Relay signal, RS485
Flexibility	Integrate with any access control

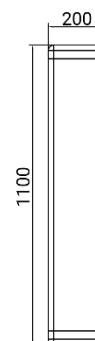
## Dimensions



### Front View



### Side View



### Top View

